

SPECIFICATION

SAGV8109-ADV

☐ Customer Approved

Customer _____

Date _____

By _____

☐ Sailing's Confirmation

Approved By _____

Prepared By _____

Date: 2006.4.12

CONTENTS

General Description	1
Features.....	1
Application Scope.....	1
Driver Board Introduction.....	2
1. Brief Diagram.....	2
2. Port Definition.....	2
3. Pin Assignment.....	3
Inverter Board Introduction	4
1. Brief Diagram.....	4
2. Port Definition.....	4
3. Pin Assignment.....	4
Keyboard Function Introduction.....	5
1. Brief Diagram.....	5
2. Connector Definition.....	5
3. Keyboard Function Description	5
Mechanical Drawing.....	6

GENERAL DESCRIPTION

- ◆ APPLY TO MULTIPLE LCD MODULE: PD104VT2
- ◆ VGA AND VIDEO AND S-VIDEO INPUT SYSTEM

f_H : 48.1 KHz f_H :37.9KHz f_H :35.1KHz f_H :31.5KHz

f_V : 85Hz f_V : 75Hz f_V : 72Hz f_V : 60 Hz f_V : 56 Hz

$DOT\ CLK$: 50Mhz $DOT\ CLK$: 40Mhz $DOT\ CLK$: 36Mhz $DOT\ CLK$: 25.175Mhz

- ◆ POWER SOURCE DC 12V
- ◆ POWER CONSUMPTION 700 mA , 8.4W Max.
- ◆ OPERATING TEMPERATURE 0°C ~ 60°C
- ◆ STORAGE TEMPERATURE -20°C ~ 80°C
- ◆ WEIGHT <100g

FEATURES

- ◆ VGA /SVGA/XGA INPUTS
- ◆ 6-BIT RGB OUTPUT
- ◆ CONVENIENTLY ADJUST IMAGE BY OPERATING KEYBOARD
- ◆ SUPPORT INTERGRATED PLL TECHNOLOGY
- ◆ LOW POWER COMSUMPTION

APPLICATION SCOPE

- SECURITY
- PC MONITOR
- INDUSTRY CONTROL MONITOR
- POS

DRIVER BOARD INTRODUCTION

1. Brief Diagram (Refer Appendix Page For Details)

2. Port Definition

- CN1 -----Connection port of Driver Board to LCD (TTL);
- CN12-----Connection port of Driver Board to LCD (FPC compatible with Tx18D11)
- CN2-----Connection with LCD (FPC compatible with LQ080v3DG01)
- CN3 -----Keyboard operation port;
- CN4A -----Power input port (DC12V) (2PIN)
- CN4B-----Power input port (DC12V)
- CN5 -----Output port for inverter.
- CN6 -----Analog VGA input port (12 pin);
- CN17-----YPbPr input port;

- j) CN8 -----Video & S-Video input;
- k) CN11-----TV INPUT
- l) CN14C-----Connection port of AUDIO IN;
- m) CN15A -----Connection port of SPEAKER OUT;
- n) CON2 CVBS OUTPUT;
- o) CN19 Test port for factory;
- p) VGA CABLE

*** All ports define square pad as the first position in this book.**

3. PIN ASSIGNMENT

CN1: TTL Connector (MOLEX-87758-34 or compatibility)

1	GND	2	DCLK	3	DHS	4	DVS
5	GND	6	DRED2	7	DRED3	8	DRED4
9	DRED5	10	DRED6	11	DRED7	12	GND
13	DGRN2	14	DGRN3	15	DGRN4	16	DGRN5
17	DGRN6	18	DGRN7	19	GND	20	DBLU2
21	DBLU3	22	DBLU4	23	DBLU5	24	DBLU6
25	DBLU7	26	GND	27	DEN	28	VCC
29	VCC	30	L/R	31	U/D	32	NC
33	NC	34	NC				

CN2: FPC Connector (Face down: ELCO 6210-40pin or compatibility)

The port compatible with the TFT-LCD TX18D11VAC

CN12: TTL Connector (Face down: ELCO 6210-32pin)

The port compatible with the TFT-LCD LQ080V3DG01

CN3: Key Connector (JST or compatibility)

Pin NO	DEF.	Pin NO	DEF.
1	LED-R	5	KEY-AD1
2	LED-G	6	IR(REMOTE)
3	POWER	7	GND
4	KEY-AD0	8	5V

CN5: Inverter Connector (JST B3B-XH-A or compatibility)

Pin NO	DEF	Pin NO	DEF	Pin NO	DEF
1	+12V	2	GND	3	On/Off

CN15A: SPEAKER OUT Connector (JST B4B-XH-A or compatibility)

Pin NO	DEF.	Pin NO	DEF.	Pin NO	DEF.
1	GND	3	GND		
2	R-OUT	4	L-OUT		

CN6: 12PIN VGA Connector (JST B12B-PH-K-S or compatibility)

Pin NO	DEF	Pin NO	DEF	Pin NO	DEF	Pin NO	DEF
1	GND	4	GREEN	7	GND	10	CON
2	RED	5	GND	8	HD	11	SDA
3	GND	6	BLUE	9	VD	12	SCL

CN17: 5PIN YPbPr Connector

Pin NO	DEF.	Pin NO	DEF.	Pin NO	DEF.
1	GND	2	Y	3	GND
4	Pb	5	Pr		

CN8: VIDEO AND S-VIDEO (JST B5B-PH-K-S or compatibility)

Pin	DEF.	Pin	DEF.	Pin	DEF	Pin	DEF.	Pin	DEF
1	GND	2	VIDEO	3	GND	4	Y-IN	5	C-IN

CN11: 10PIN TV Connector (JST B10B-PH-K-S or compatibility)

Pin NO	DEF.	Pin NO	DEF.	Pin NO	DEF.
1	SCL	5	TV AUDIO	9	NC
2	SDA	6	NC	10	GND
3	TV VIDEO	7	5V		
4	NC	8	GND		

CN4A: Power Connector (JST B2B-XH-A or compatibility)

Pin NO	DEF	Pin NO	DEF
1	+12V	2	GND

CN4B: Power Connector

Pin NO	DEF	Pin NO	DEF
1(IN)	+12V	2(OUT)	GND

CN14C: AUDIO IN Connector (JST B4B-XH-A or compatibility)

Pin NO	DEF.	Pin NO	DEF.	Pin NO	DEF.
1	GND	3	GND		
2	L-IN	4	R-IN		

KEY BOARD INTRODUCTION

1. Brief Diagram (Refer Appendix Page For Details)

2. Connector Definition

CN3——This connector connected to key operation port of driver board.

TV signal input:

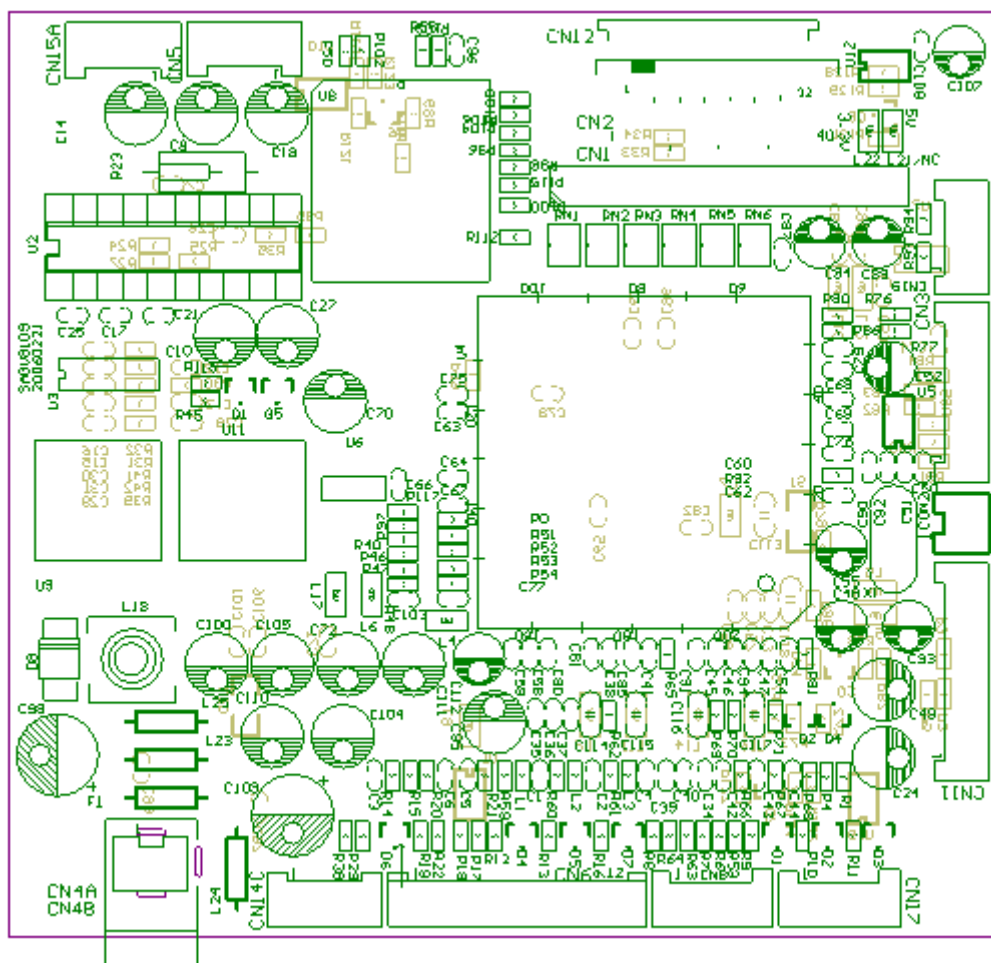
MENU ITEM	SUBMENU	DESCRIPTION
TV Setting	Channel	Adjust the TV channel
	Color system	Adjust the color
	Sound	Select the audio frequency band
	Auto search	Auto search TV

Notes:

- Do as foregoing description if want to get favorite image. But the best state is set before shipment
- Occasional flare of Image may occur when starting the LCD monitor, it is normal pheno mena because of auto adjustment internal.
- Particularly there is snow-flare and bad pictures because that timing does not match with the sequence, please execute auto or handle adjustment.

MECHANICAL DRAWING

Driver Board



Outline: 100*93*15MM

4 HOLES:90*71MM

Top layer High (Max): 14MM

Board Thickness: 1.6mm

Screws: D 3.0mm